



ACCOMMODATION and TRANSPORTATION

at MDA college

ACCOMMODATION



01

At Student Homestay Ltd, we provide comfortable, safe, and culturally enriching accommodation for students in the UK. Join Student Homestay Ltd for a memorable study abroad experience. Your adventure starts here!

Host Family Packages

Meal Plan	Weekly Plan
HB	£230
B&B	£210

- ✓ HB (Half Board): Breakfast + Dinner
- ✓ B&B: Bed and Breakfast ONLY
- ✓ Special diet included in the price
- ✓ Halal, Vegan and Vegetarian
- ✓ Close proximity to city center
- ✓ Carefully selected host families
- ✓ Wifi and Laundry included
- ✓ One Bus Journey



FOR MORE INFORMATION

ACCOMMODATION

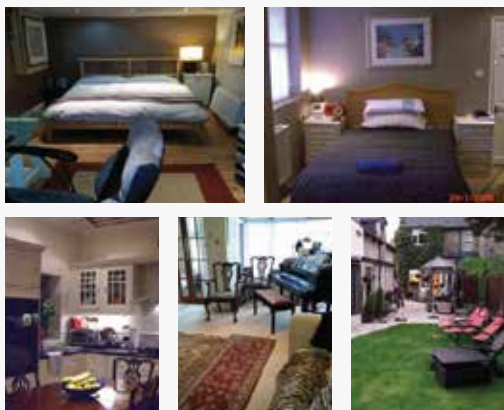
Host Family 01

📍 DISTANCE FROM COLLEGE: 35-40 min



Host Family 02

📍 DISTANCE FROM COLLEGE: 10-20 min



Host Family 03

📍 DISTANCE FROM COLLEGE: 15-20 min



Host Family 04

📍 DISTANCE FROM COLLEGE: 13-20 min



You can also use these services but MDA College have no partnership with them



iqstudentaccommodation.com



**campus living
villages**

campuslivingvillages.com

**UNITE
STUDENTS**

unitestudents.com/leeds

TRANSPORTATION

01

Airport Transfer

You can book your airport transfers with us.

Manchester ➤ Leeds

- > **Without Traffic:** 1 hour & 3 minutes
- > **With Traffic:** Around 2 hours

Leeds ➤ College

- > **With Traffic:** Around 24-30 minutes
- > The Time depends upon your accommodation location.

Local Taxis

- > These will be **more expensive** as they charge per mile, and traffic can make the price increase.

02

Airport Transfer Prices

Followings are the prices for airport transfers with us.

Leeds Bradford Airport

- > **Fee:** £30
- > **Fee for Additional Person:** £10

Manchester Airport

- > **Fee:** £130
- > **Fee for Additional Person:** £50

London Airports

- > **Fee:** £265
- > **Fee for Additional Person:** £150



Contact Us

+44 (0) 113 226 1789

info@mdacollege.com

York House, St Andrews Court, LS31JY,
Leeds, United Kingdom

You can also use these services but MDA College have no partnership with them

Uber

trainline